

Introducing...

GREEN POOLS



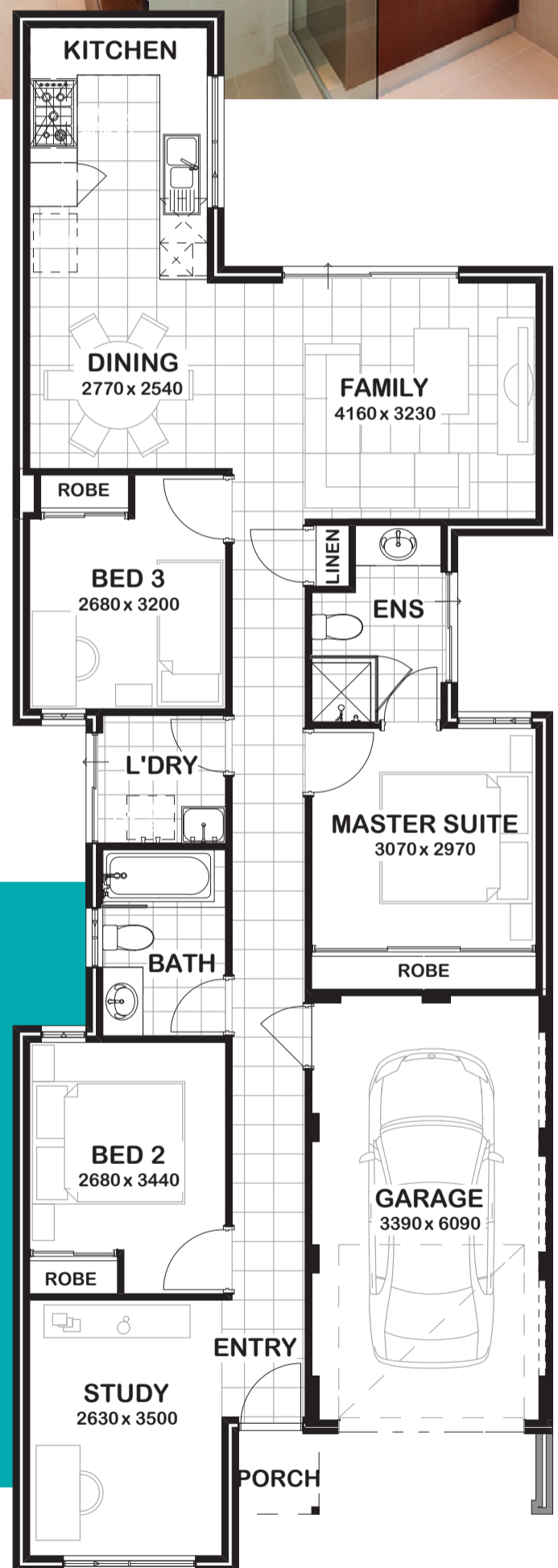
DIVE INTO THIS PRACTICAL DESIGN!

Green Pools is a three bedroom, two bathroom home design, complete with study and single lock up garage. The kitchen is to the rear of the home looking out into the backyard and allowing plenty of natural light to enter this compact home.

TOTAL AREA 128.12m²
FRONTAGE Suits 7.5m

BIG VALUE INCLUSIONS

- ✓ Ducted reverse cycle air conditioning
- ✓ 30c high ceilings throughout
- ✓ Stone benchtops to kitchen
- ✓ 900mm kitchen appliances – rangehood, stove and oven
- ✓ Soft closing drawers and doors to kitchen and bathrooms
- ✓ Mirrored robe doors
- ✓ NBN 4 point pack
- ✓ 26L Instantaneous Hot Water System
- ✓ Bluepine roof timber
- ✓ Glass shower screen doors



BIG VALUE SERIES

gemmill.com.au

Gemmill
HOMES