

THE CALIFORNIA

4 Bedroom | 2 Bathroom

The California is a sophisticated rear loaded design which seamlessly integrates the inside and outside in this sleek and classy home.

Upon entering this light and bright energy efficient home design, you are greeted with high ceilings and sweeping views of the central alfresco courtyard area which also complements the kitchen, dining and lounge area.

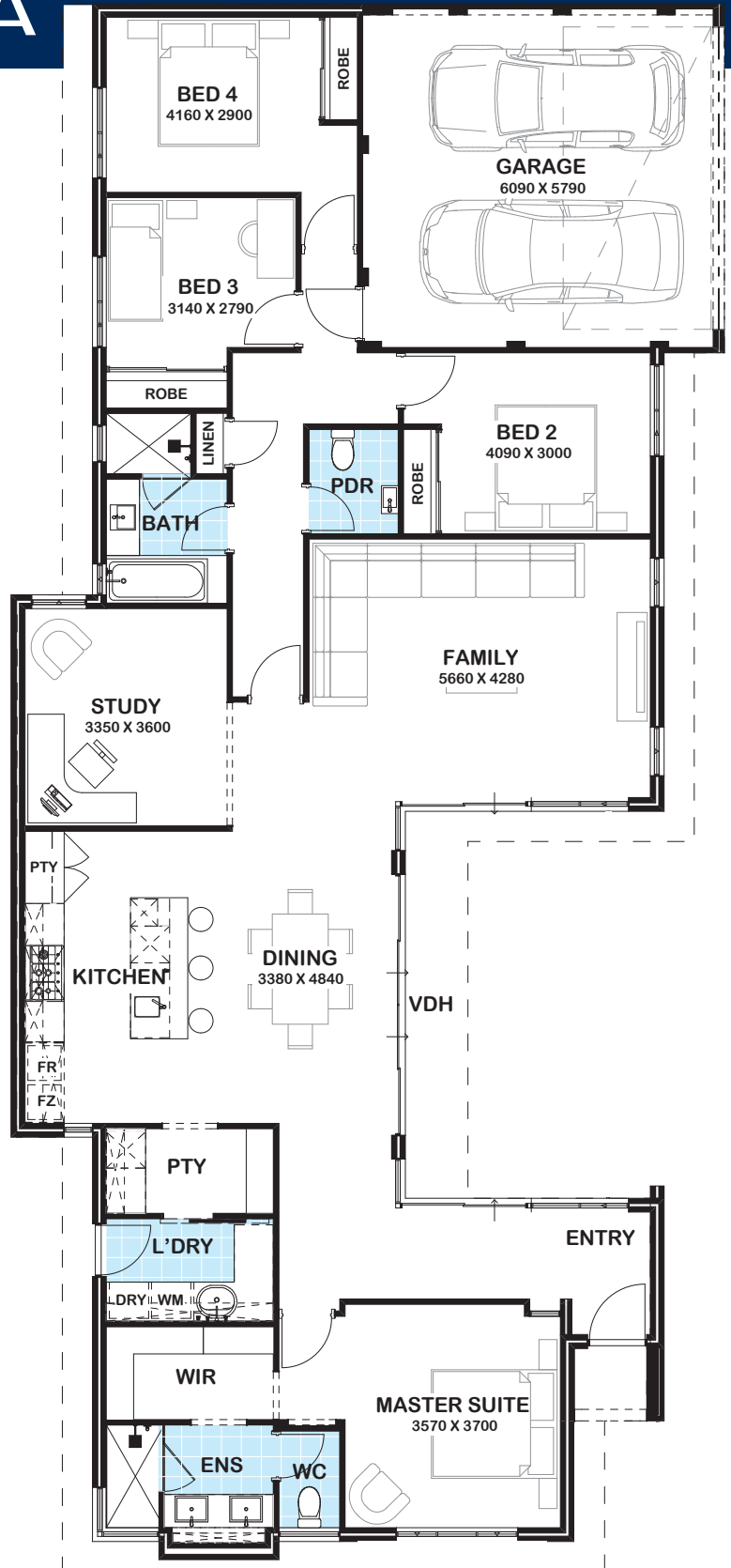
The entry passage leads to the luxurious master suite wing en route to the open plan living area in the middle of the home. The kitchen features an island bench, loads of storage and a walk-through pantry which provides access to the laundry. Complete with a dedicated study room and three other bedrooms with secondary bathroom to the rear, this modern home is specifically designed to suit those looking to build on a corner or rear-lane access block.

Why choose Gemmill Homes?

The answer is simple. Gemmill Homes represents excellent quality at the right price. We have the vision and flair to design dwellings for today's lifestyle.

Total Area 236.00 m²
Living Area 193.00 m²
Suits 12.5m frontage

Note: All measurements are approximate



**HE STANDS BEHIND
EVERY HOME HE BUILDS**