

# Introducing...

# THE CHARLTON



## A MULTI-GENERATIONAL HOME WITH REAL VALUE

The Charlton is a four bedroom, three bathroom home which features a guest suite to the front of the home, complete with kitchenette and living area overlooking the front garden and is one of our multi-generational home designs.

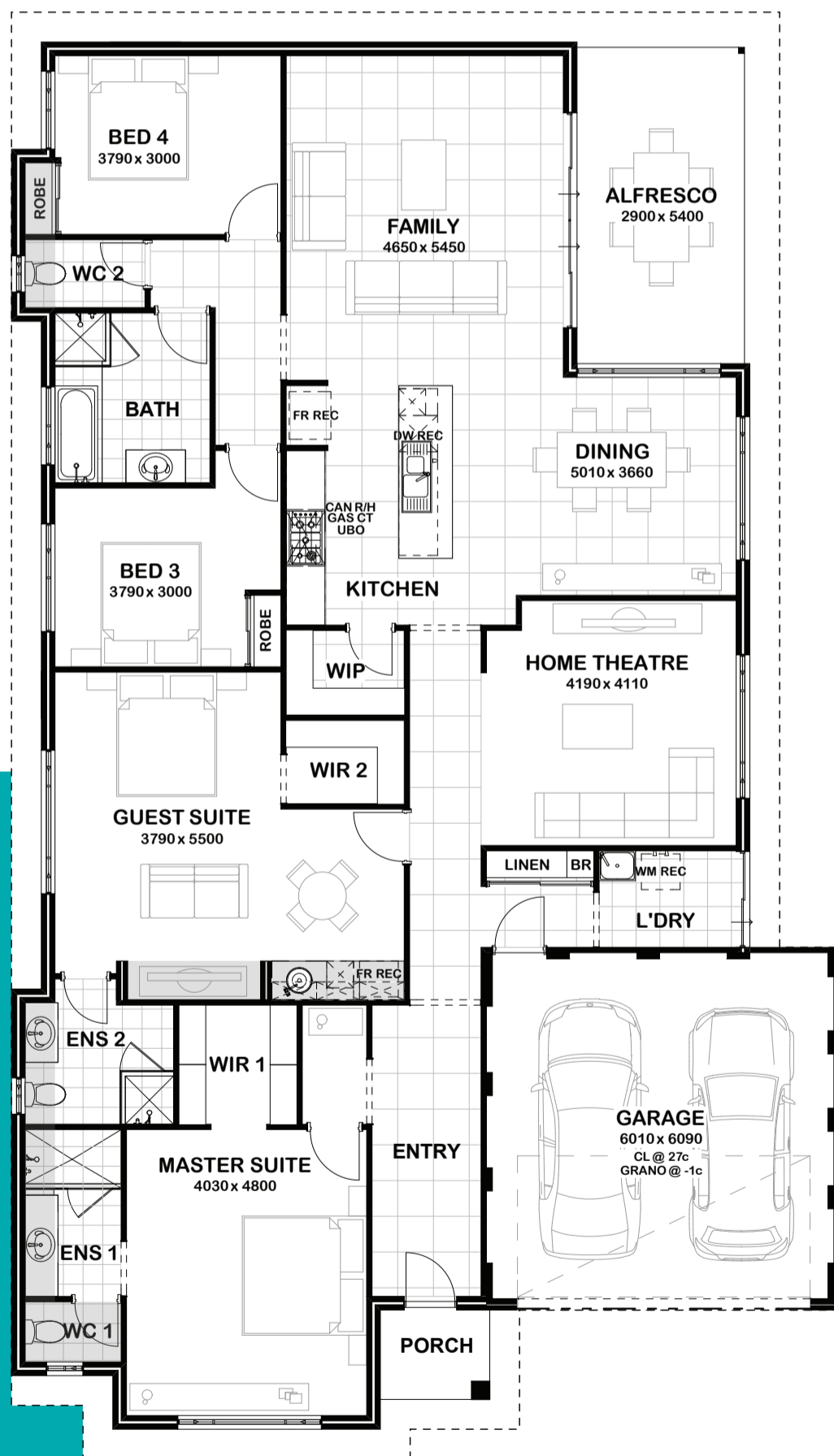
The master suite with large walk-in robe, home theatre, minor bedrooms and open plan living area are located at the rear of the home, allowing for as much or as little interaction with the guest suite, depending on the living arrangement.

The kitchen makes a statement with its island bench, and from the family room there is access to the outdoor alfresco area making this home an entertainer's dream.

**TOTAL AREA** 279.27m<sup>2</sup>  
**FRONTAGE** Suits 15m

### BIG VALUE INCLUSIONS

- ✓ 30c high ceilings throughout
- ✓ NBN 4 point pack
- ✓ Choice of either Colorbond Roof or Roof Tiles from Builders range
- ✓ Two tone render for front elevation
- ✓ Ducted Reverse Cycle Air-conditioning
- ✓ 900mm kitchen appliances - rangehood, stove and oven
- ✓ Soft closing drawers and doors to kitchen and bathrooms
- ✓ 600m x 600m floor tiling to entry and main living areas
- ✓ Carpets to bedrooms and theatre
- ✓ Blinds throughout (excluding wet areas)
- ✓ Lighting Package (10 x downlights, 3 x pendant lights and 2 x pillar lights)
- ✓ Stone benchtops to Kitchen, Bathrooms, Laundry
- ✓ Kitchenette features - overhead cupboards, inset sink, fridge recess, stone benchtop



# BIG VALUE SERIES

[gemmill.com.au](http://gemmill.com.au)

